



# ROSLYN LANDING









# ROSLYN LANDING

AN EXCEPTIONAL OPPORTUNITY IN  
THE HISTORIC VILLAGE OF ROSLYN



Roslyn Landing is a uniquely distinguished condominium development, offering the finest amenities of metropolitan living and every luxury of Long Island's storied Gold Coast. This limited collection of residences includes two- to three-story townhomes and single family homes designed in a classic architectural style to seamlessly complement the village's historic ambiance. Twelve acres of beautifully landscaped grounds create a serene neighborhood enclave just steps away from Roslyn's charming shops, celebrated dining and entertainment. Discover the essence of exceptional living in this exclusive new community.





## LIVING IN HARMONY



Roslyn Landing offers a rewarding living experience with a welcome balance of city and village, natural and refined, private and social. Lush landscaped grounds feature a waterfront promenade, village green space, two ponds and access to the village dog run.











## YOUR GRACIOUS NEW HOME



Roslyn Landing has been designed with timeless appeal inside and out. A classic exterior architectural style with brick masonry complements the historic village of Roslyn. Thoughtfully appointed interiors feature rich finishes and modern luxury amenities.

Enjoy your own private elevator, a two-car attached garage, solid white oak hardwood flooring, solid core doors and custom architectural millwork throughout.







## kitchens designed to your taste

Enjoy cooking more in your custom, professionally equipped kitchen, offered in three distinct styles. Elegant finish choices include rich marble or Caesarstone countertops, and custom cabinetry options range from traditional to modern. A full suite of stainless steel appliances by Wolf, Sub-Zero and Bosch are included in every home.







## elegant bedrooms

Relax and enjoy the comforts of generously proportioned bedrooms with abundant natural light, walk-in closets and luxurious en-suite baths.





## luxurious baths

Rich marble accentuates the spa-like quality of all baths and powder rooms at Roslyn Landing. In master baths, the luxury continues with glass-enclosed showers, custom white millwork vanities, under-mounted sinks and polished fittings by Kohler.







## an exclusive club house

Along with Roslyn Landing's lush outdoor amenities, including a waterfront promenade, village green space, two ponds and access to the village dog run, the Club House is the center of community. Here, residents can relax and enjoy a beautifully designed space with a billiards table, bar, lounge, dining area and catering kitchen. A golf simulator, fitness center and adjacent children's playroom complete the ample, engaging recreational opportunities right at home.







# DISTINCTIVELY GOLD COAST. CONVENIENTLY CLOSE.



From 17th Century homesteads to 21st Century boutiques, the 400-year story of the Gold Coast abounds. Natural treasures, fine museums, sparkling waterfronts, designer shops and the bookmarks of American history are yours to discover and just moments away from Roslyn Landing. The open-air shopping of Americana Manhasset is only five minutes away, as are golf courses, country clubs and beautiful beaches along the North Shore.







OPEN WEDNESDAY - MONDAY  
10 AM - 5 PM LAST ENTRY 4 PM  
NO TRUCKS OR BUSES PERMITTED  
USE 60 FOOT ROAD

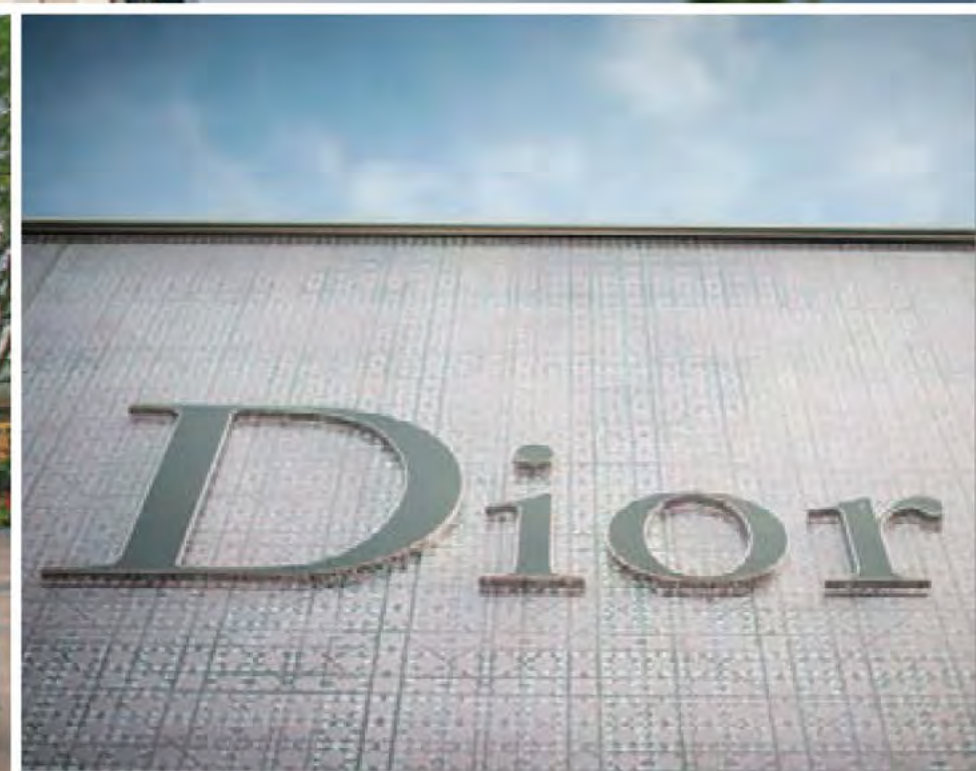


## the village

Tree-lined streets and a picturesque downtown lined with unique shops and eateries lie just steps from Roslyn Landing. Pass historic homes and monuments on the way to beautiful Gerry Park, a 16-acre gem located in the center of the village. And while the neighborhood provides every metropolitan amenity within minutes of Roslyn Landing, Manhattan is a close and easy-to-reach destination with nearby access to the LIE and LIRR via the Roslyn, Greenvale and Manhasset stations.















# history awaits

Rich in history, the Gold Coast invites you to explore the enlightening lore of yesteryear. Cedarmere, the home of William Cullen Bryant; the Bryant Library, conceived as a reading room and lecture hall by the poet himself; the pre-Civil War homesteads of the Main Street Historic District; and Sagamore Hill, the home and “Summer White House” of Teddy Roosevelt.









## THE TEAM



Roslyn Landing is conscientiously conceived and expertly crafted by two resident companies with roots on the North Shore of Long Island. Built by The Ranches, a quality North Shore home builder with over 30 years of experience, and financed by G4 Capital Partners, a private equity group founded in 2005, both are proud to present this luxurious new community in the neighborhood they call home.



# ROSLYN LANDING

RoslynLanding.com | 516.621.3110  
1407 Old Northern Boulevard, Roslyn, NY 11576

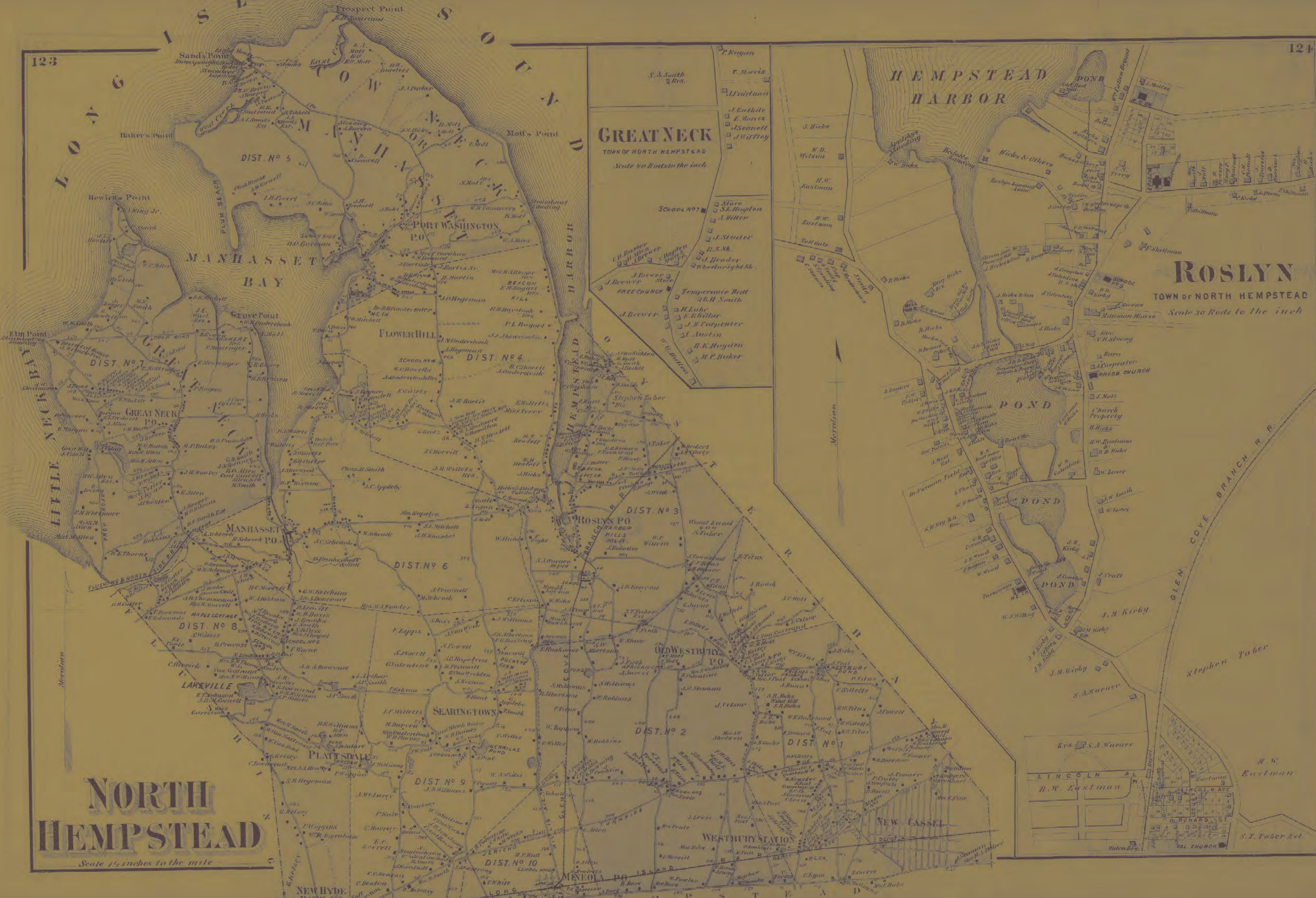
The complete offering terms are in an offering plan available from Sponsor. File No. CD15-0170. All images are artist's renderings and are provided for illustration purposes only. Sponsor reserves the right, in accordance with the terms of the Offering Plan, to substitute materials, appliances, equipment, fixtures and other construction and design details specified herein with similar materials, appliances, equipment, and/or fixtures of substantially equal or better quality. All square footages and dimensions are approximate and subject to normal construction variances. Square footage exceeds to usable floor area. Sponsor reserves the right to make changes in accordance with the terms of the offering plan.

Sponsor: File No. CD15-0170. Sponsor: BITI, LLC, 111 South Street, Suite 227, Oyster Bay, NY 11771.



123

124



**NORTH  
HEMPSTEAD**

Scale 1/4 inches to the mile



